

# Cacti

Cacti est une surcouche à rrdtool qui permet de stocker tout ce qui vous est nécessaire.

# Cacti

cacti - Microsoft Internet Explorer

File Edit View Favorites Tools Help

Back Forward Stop Home Search Favorites Media Print

Address http://web/cacti/cacti-0.8/host.php

console graphs Logged in as admin

Graph Setup  
Graph Management  
GPRINT Presets  
Graph Trees  
Colors  
Templates  
Graph Templates  
Host Templates  
Data Templates  
Data Gathering  
Data Sources  
Polling Hosts  
Available RRA's  
Data Input Methods  
Data Queries  
CDEF's  
Configuration  
Utilities  
Cacti Settings  
Utilities  
User Management  
Logout User

**Save Successful.**


**Create 2 Graphs from SNMP Query**  
SNMP Query [SNMP - Interface Statistics]  
**Interface - Traffic -> Index Type**  
When these graphs are created, the following data input field will be filled with data from the SNMP host. ifIndex (Index)

Graph [Template: Interface - Traffic (bytes/sec)]	
<b>Title</b>	Using Suggested Values (see SNMP Query)
<b>Data Source</b> [Template: Interface - Traffic]	
<b>Name</b>	Using Suggested Values (see SNMP Query)
<b>Maximum Value</b>	Using Suggested Values (see SNMP Query)
<b>Maximum Value</b>	Using Suggested Values (see SNMP Query)

**Create 3 Graphs from SNMP Query**  
SNMP Query [ucd/net - Get Monitored Partitions]  
**ucd/net - Hard Drive Space -> Index Type**  
When these graphs are created, the following data input field will be filled with data from the SNMP host. dskIndex (Index)

Graph [Template: ucd/net - Available Disk Space]	
<b>Title</b>	Using Suggested Values (see SNMP Query)
<b>Data Source</b> [Template: ucd/net - Hard Drive Space]	
<b>Name</b>	Using Suggested Values (see SNMP Query)

cancel save



Done Local intranet

# Cacti

cacti - Microsoft Internet Explorer

File Edit View Favorites Tools Help

Back Forward Stop Home Search Favorites Media Print Mail

Address http://web/cacti/cacti-0.8/host.php?action=edit&id=2

console graphs Logged in as admin

**Graph Setup**

- Graph Management
- GPRINT Presets
- Graph Trees
- Colors

**Templates**

- Graph Templates
- Host Templates
- Data Templates

**Data Gathering**


- Data Sources
- Polling Hosts
- Available RRA's
- Data Input Methods
- Data Queries
- CDEF's

**Configuration**

- Utilities
- Cacti Settings

**Utilities**

- User Management
- Logout User



**Polling Hosts [edit: Radish]**

**Description**  
Give this host a meaningful description. Radish

**Host Template**  
Choose what type of host, host template this is. The host template will govern what kinds of data should be gathered from this type of host. ucd/net SNMP Host

**Hostname**  
Fill in the fully qualified hostname for this device. 192.168.1.101

**Management IP**  
Choose the IP address that will be used to gather data from this host. The hostname will be used a fallback in case this fails. 192.168.1.101

**SNMP Community**  
Fill in the SNMP read community for this device. public

**SNMP Username**  
Fill in the SNMP username for this device (v3).

**SNMP Password**  
Fill in the SNMP password for this device (v3).

**SNMP Version**  
Choose the SNMP version for this host. Version 1

**Associated SNMP Query**  
If you choose to add this SNMP query to this host, information will be queried from this host upon addition. None

**Create Associated Graphs + Data Sources**

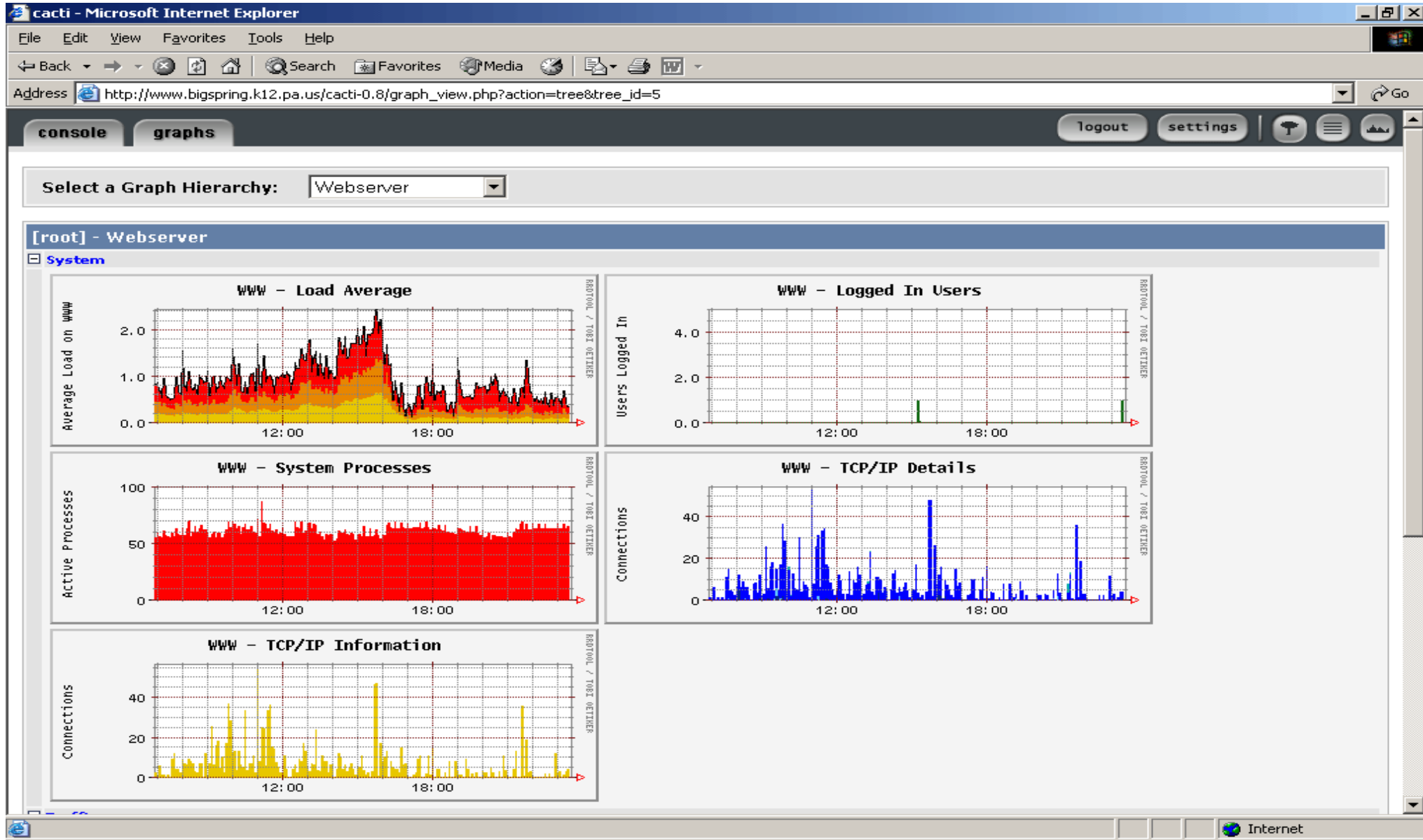
Graph Template Name	<input type="checkbox"/>
Create: ucd/net - CPU Usage	<input type="checkbox"/>
Create: ucd/net - Load Average	<input type="checkbox"/>
Create: ucd/net - Memory Usage	<input type="checkbox"/>

**SNMP Query [SNMP - Interface Statistics]**

Index	Description	Alias	Type	Speed	Hardware Address	IP Address	<input type="checkbox"/>
1	lo		softwareLoopback(24)	10000000		127.0.0.1	<input type="checkbox"/>

Done Local intranet

# Cacti



# Cacti

